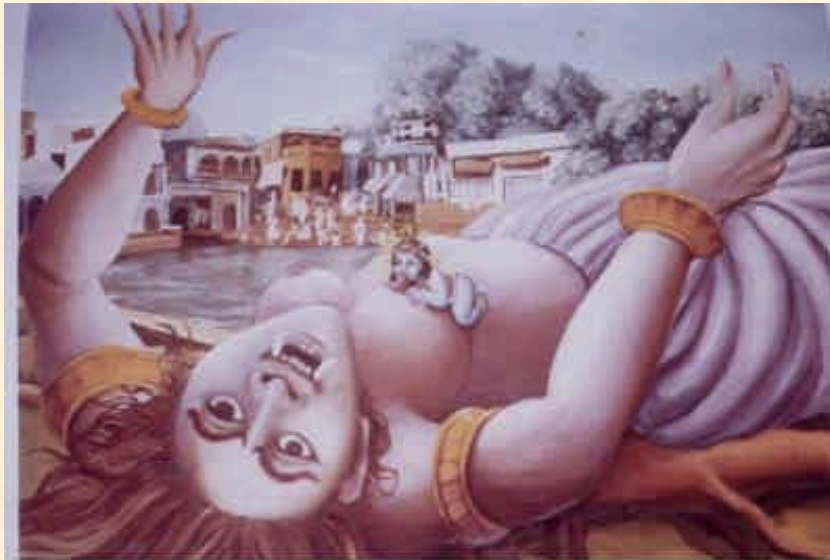


**The 7th International Iridology Symposium
in London
27-28 September 2003**



***Breast Cancer Theory,
profiling through Iridology & Therapies***



Professor Serge Jurasunas

**Member of
American Academy
of Anti-aging Medicine**

**Rua da Misericórdia, 137 – 1º
1200-654 Lisboa
Portugal**

Phone: 351 21 347 11 17

Fax: 351 21 347 11 19

Email: sergejurasunas@natiris.pt

Introduction

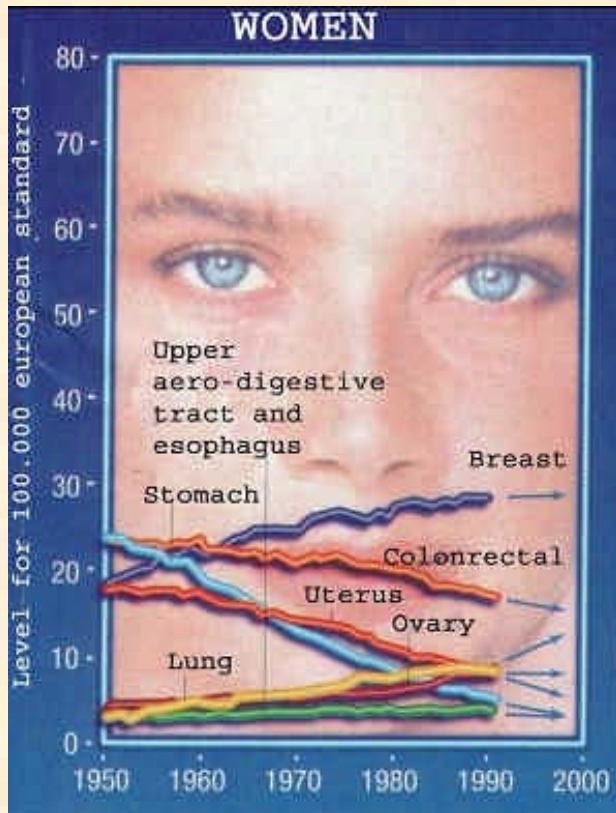
Breast cancer is to a woman a depressive disease.



The usual treatment, often demanding mutilation and aggressive treatments is depressive and sometimes death comes after a long painful period of illness, hope, recurrence, which is unacceptable.

Breast Cancer in the western world –Cancer a local disease

Breast cancer is the most common cancer in women accounting for 32% of all female cancer.



-It is estimated that one woman in eight (12,6%) will develop breast cancer sometime during her lifetime.

- Breast cancer is uncommon in women under the age of 35 to 40 (but not inevitable) – Most breast cancer cases occur in women over the age of 50 and the risk is especially high for women over age 60.

Genetically inherited forms of breast cancer are only about 5 to 10 percent of breast cancer cases overall.

- Cancer genes BRCA1 and BRCA2 mutated.

- P53 gene mutated – (occur in 30 – 40% of breast cancer – responsible in 1995 (USA) 46.290 patients death.(1)

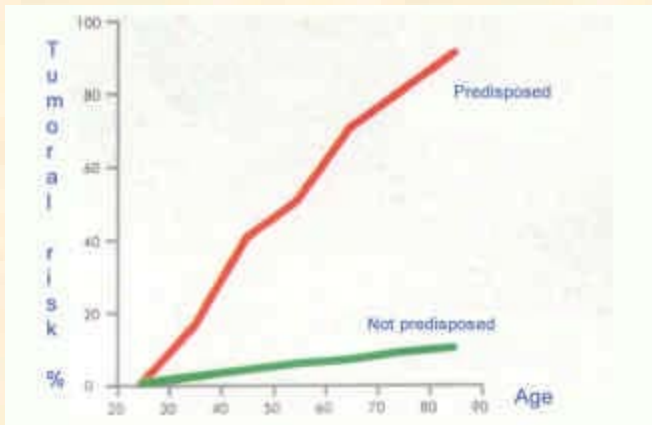
- When the P53 genes is inhibited or mutated chemotherapy and radiation accelerate tumor growth or metastasis spread.

- The risk of development of a second primary breast cancer is significantly higher for women with hereditary breast cancer.

(1) Arnold Levine National Cancer Institute, Hutchinson cancer research center, USA.

Breast Cancer: Evaluation Risk

-5% of the breast cancer are of genetic origins. This number appear low but in France one woman out of eight hundreds exhibit an abnormal gene BRCA1 – (Seventeen thousand and five hundred women aged from 30 to 70 years.



Those women shown a high risk to develop a breast cancer.

80-90% against 7 to 10% in the female population without abnormal gene (1)

(1) D.F. Easton et al, Am.J.Hum.Genet.56.296.1995

Environment factors as agent of Breast Cancer

Pollution is responsible up to 70% of breast cancer (1)

- Industrial and agricultural chemicals (xenobiotic).
- Excessive ultra-violet radiation.
- Overexposure to sun – sunlamps.
- Excessive X-rays.
- Estrogenic factors.
- Underlying environment causes involving car, air, food, and water include.
- Tobacco.



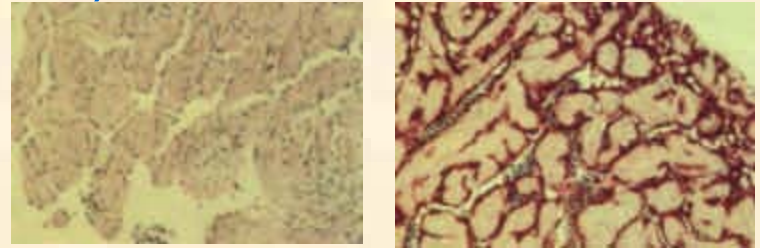
in

(1) Samuel S. Epstein, MD, and David Steinmar: Breast Cancer: Poisons, Profiles and Prevention. 1998. Townsend Letter for Doctors and Patients. # 178, page 24

Environmental Medical laboratory – Munich Dr. Celeda and Dr. Bartram

- Environmental influences combined with individual Genetic conditions are responsible for the worldwide increase of Health Problems (1998).

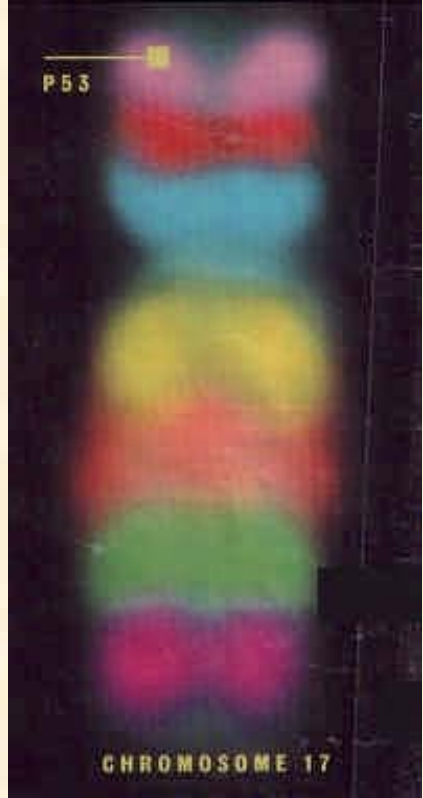
*Toxic environmental influences.
Data from 1500 patients.*



80% of the patients displaying toxic symptoms, suffer from a weak detoxification system with insufficient kidney liver function and irregularities of the digestive system. Patients with a certain genetic difference in specific genes responsible for detoxification prove to be risk persons for colon, bladder and breast cancer.



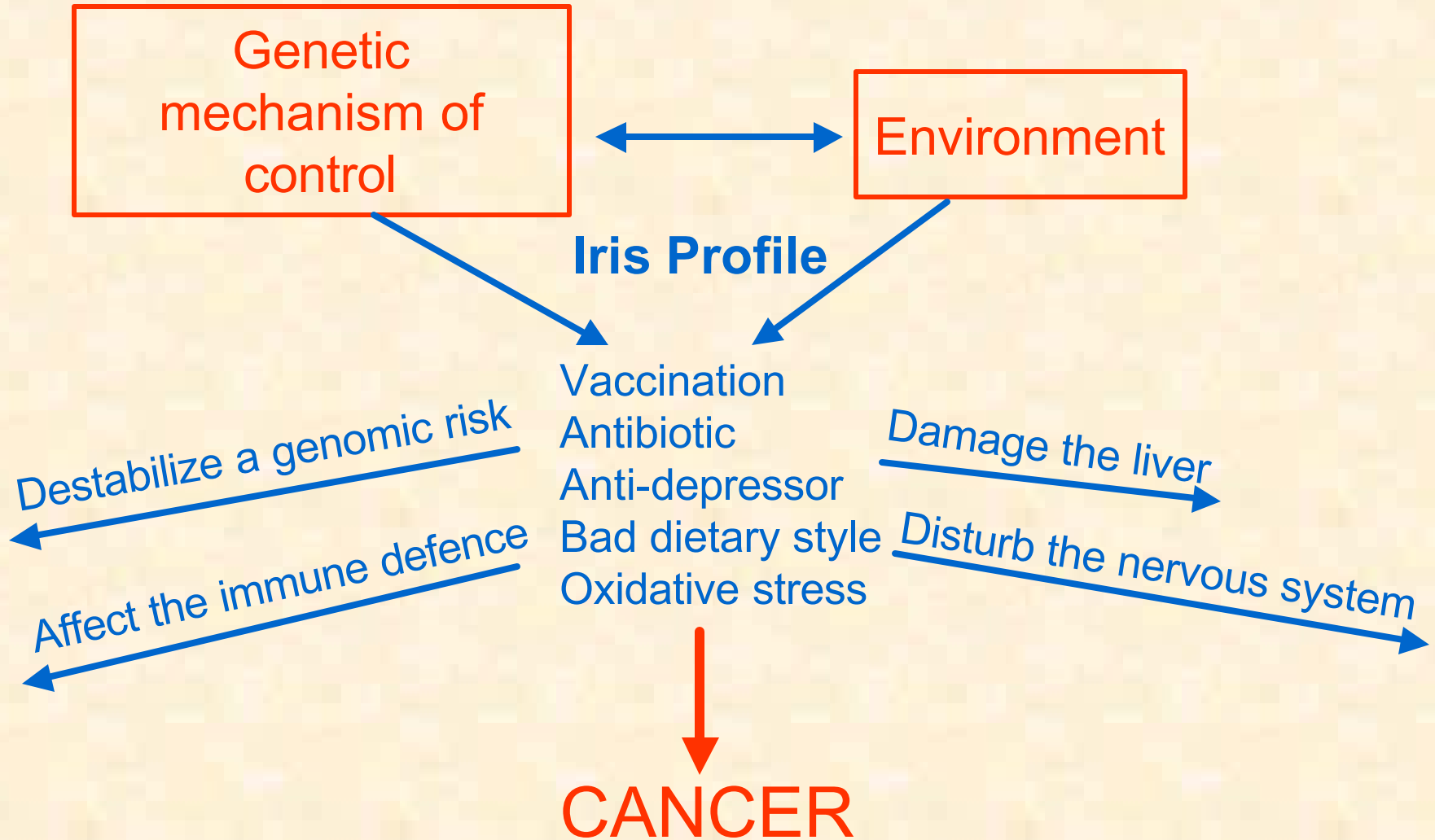
Because it metabolises carcinogens differently



- Due to different rates of DNA repair.
- To apoptosis and mitosis.
- To different levels of Phase I and Phase II detoxification enzymes.
- To Mn SOD genetic polymorphisms.
- To a more or less efficient immune system.

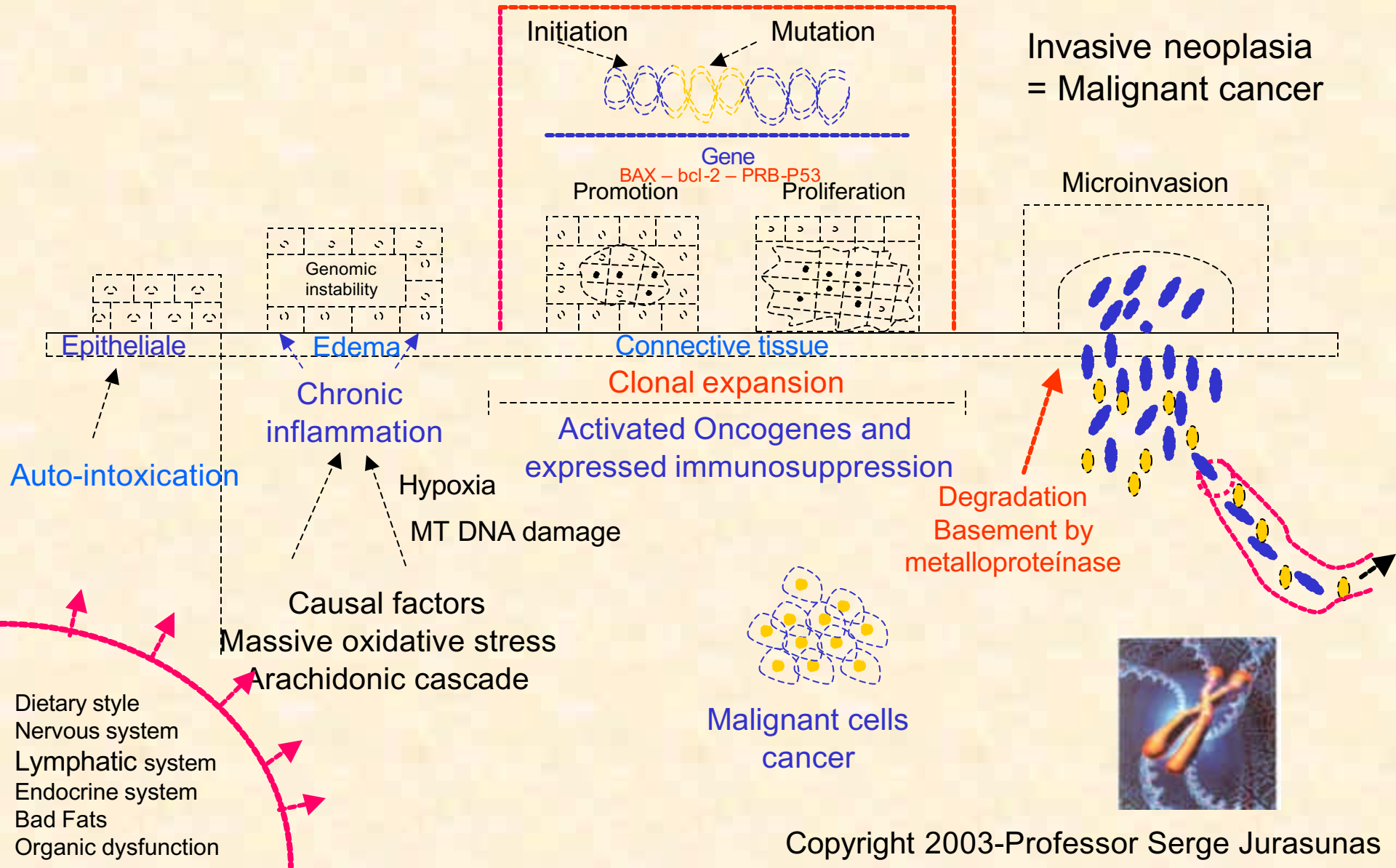
Also to genotoxic free radicals that induce inhibition and mutations of P53 gene tumor suppressor. Finger print from pesticides, industrial pollutants are found on P53 answering why so often pollution causes cancer.
Stephen Friend, Molecular Biologist.
Fred Hutigton Cancer Center – Seattle - USA

FAMILY RISK

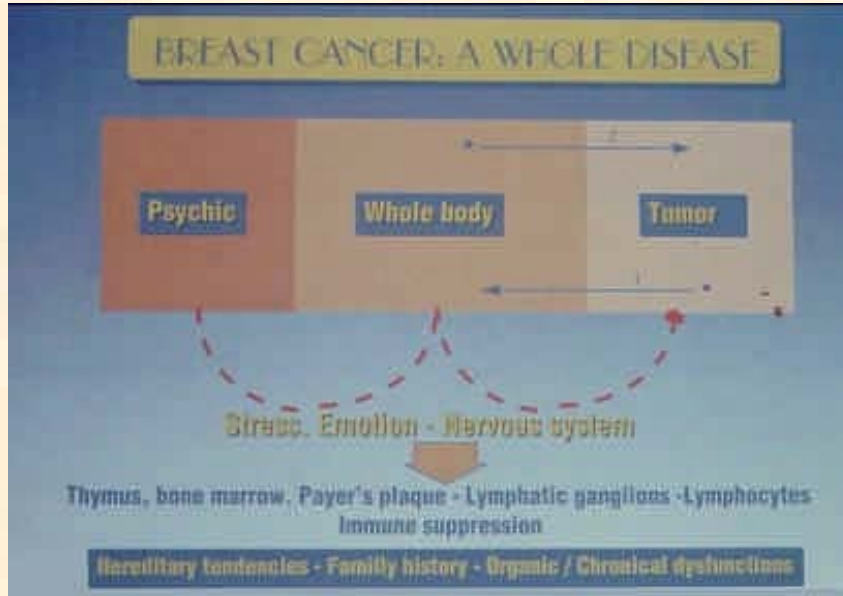


Phase of Neoplasia

How a cancer arises



To the concept of a local disease we challenge the concept of a whole disease



We must learn about the total body concept that must be seen as the entire part of a disease.

“We cannot attempt to cure one part of the body without treating the others.

We cannot attempt to cure the body if we forgot the soul”

Plato – Greek Philosopher

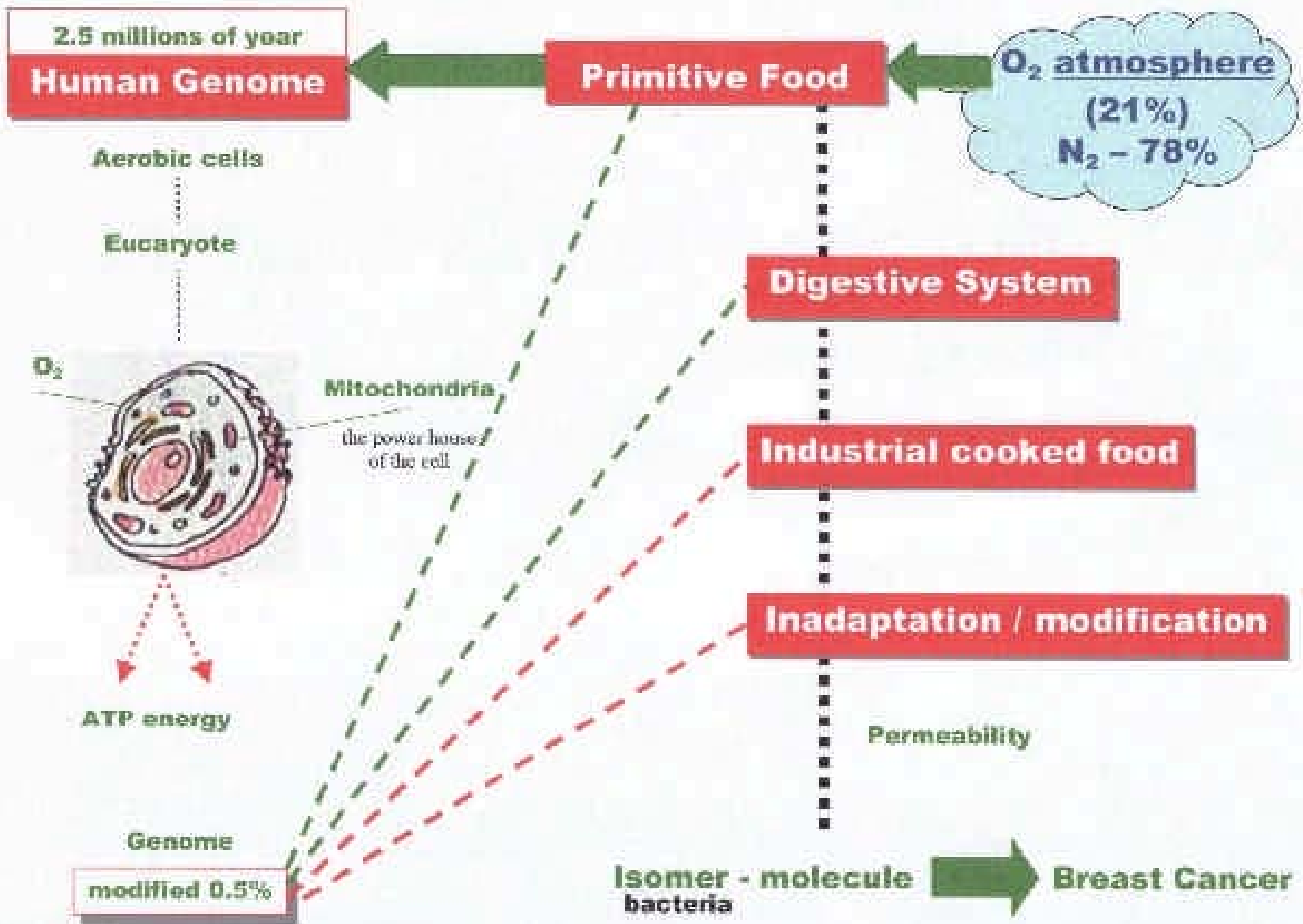
Dietary Style Breast Cancer

Despite the best efforts of surgeons and Oncologists, Americans die of breast, colon and prostate cancer at 5 to 30 times the rate of people in many parts of the world.

Sri Lanka = somewhere between 2 to 5 of every 100,000 women die of breast tumors. In the United States – 30 to 40 meet that fate. (28 for England). (1)

American Institute for Cancer Research concluded that poor eating habits account for a third of Breast Cancer. (1)

(1) (Daniel R, with Ellis R. The Cancer Prevention Book: A complete mind/body approach to stopping cancer before it starts. Alameda CA.)



Breast cancer in Japan

(Cattle's farming are inexistent in Japan.)

Until 1945 breast cancer in women was a exceptional disease

Proteins and lipids from fishes, seaweed and tofu.

1 - Japanese women emigrated to USA and adopted dietary western food. They developed breast cancer the same way as American women.
2 - New mode for Occidental food and increasing daily fat intake in Japan.

1958 - 23g of fat *per individual*
1973 - 52g of fat *per individual*

Breast Cancer increased
30%

CITATIONS

Dr. Bernard Jensen

-He pointed out logically that a tumor is part of the entire body and thus developed, reacted and grew according to some abnormal dysfunction.

-Dr. Salomon a French Oncologist at the N.C.S.R stated in this book the “split tissue”. The notion that cancer is a localized disease which tends to spread and become general may be opposed by the idea that cancer is a general disease, which determines a local tumor. P.26.1991.

-For Chinese medicine, worry and depression lead to splenic injury, weakness and low energy. Depression affects the liver (Breast cancer: The protocol. Journal of Botanical Medicine 1998 – 59-60-61 – vol.23)

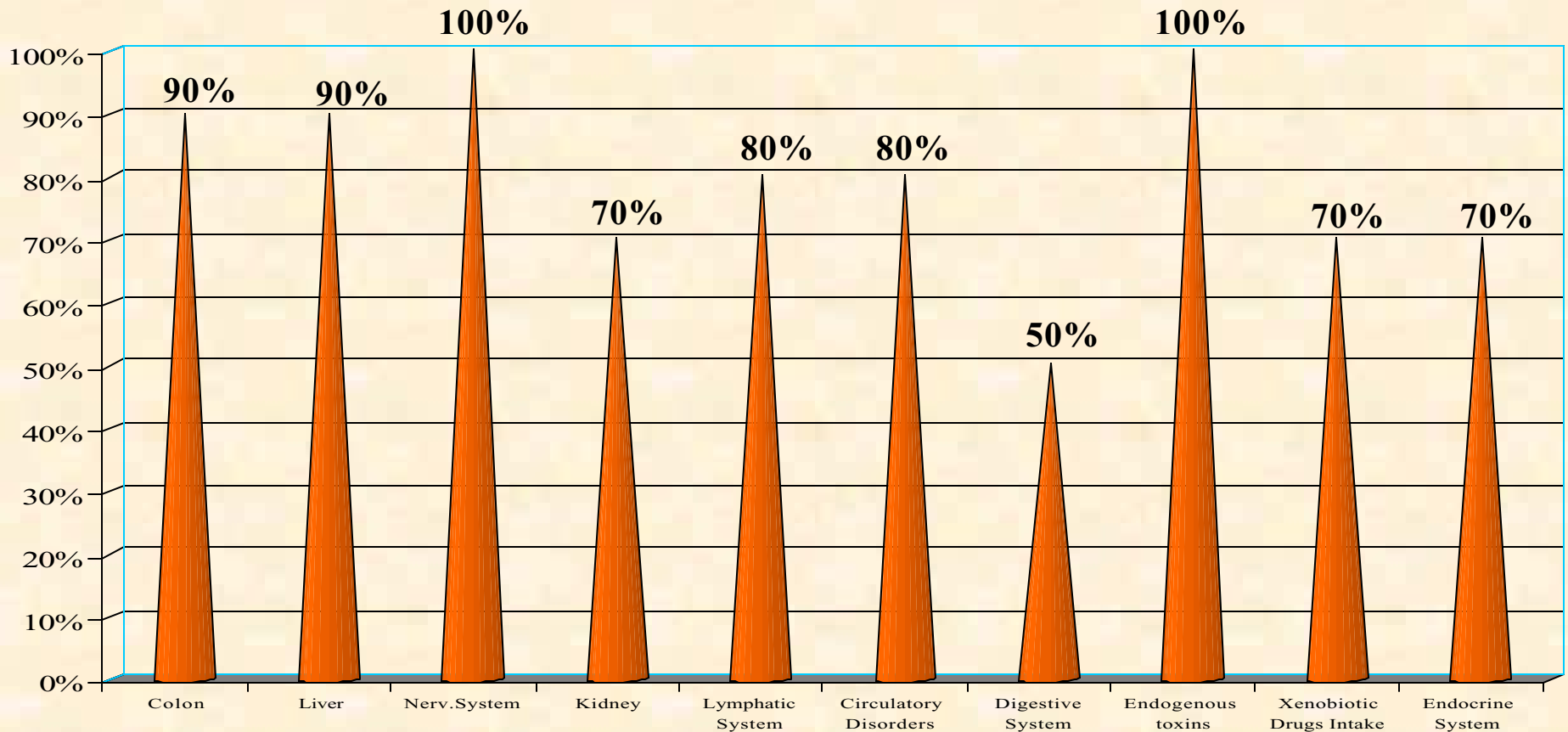


My personal experience

- According to my experience and observation over the past 3 decades cancer cannot appear in a healthy body (5-10%).
- We may assume that between 50 to 75% of their Health Status is lost. (all kind of cancer).
- My observation rely on several types of diagnosis, particularly iris observation, as one of the most interesting methods to screen patients health conditions including family history.
- 6 years ago I made an iridology profile in a survey of 1000 cancer patients also monitored by various kinds of diagnosis and questionnaire, over two decades.(1)

(1) New European Protocol for cancer: Townsend Letter for Doctors and Patients – February 1999 – Volume 187/188 p.102.106.

Iridology profile in a survey of 1.000 patients also monitored by various kinds of diagnostics and questionnaires over more than two decades.



Lymph dysfunction and its role in breast cancer

-Much evidence shows a relation between the congestion of the lymphatic system, lymph nodes and pathology of breast tumor. (1)

-Medical Research demonstrates the lymphatic system as the primary circulatory system used by all immunological support elements (macrophages. T-cells-B-cells lymphocytes) – (immunologic barrier). (2)

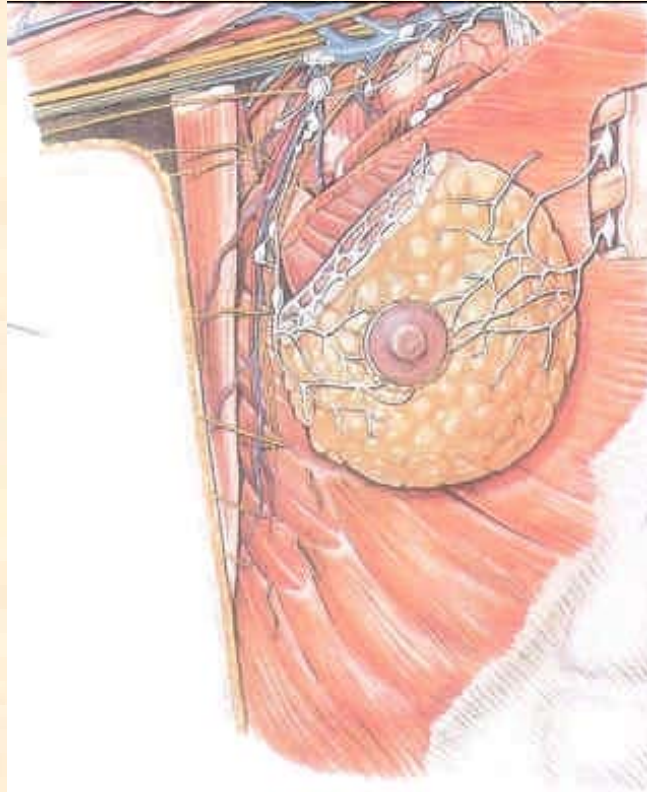
-The lymphatic system removes from all the organs the pesticides and other chemicals similar to human sex organ. The lymph detoxifies breast tissue from excess of hormones and proteins. About 85% of the fluid is drained by the axillary lymph nodes

-In breast tumor, lymph glands are swollen and accumulated hormones, microbes, virus and bacterias. Breast immune defence is reduced . High rate of lipid peroxidation is created in the tissue because of the sex hormones by- product accumulated.

(1) S. David, RP.T.M.PT, Courtland Reeves, M.S., ELF Laboratories “Lymph Dysfunction and its role in Breast Cancer” Explore, Volume 6.p.19.22.Number 2.1995.

(2) The Breast – comprehensive Management of benign and malignant disease – Kirby.I.Blaud- Eduard M.Coppeland.III – Vol.I W.B.Saunders Cop.USA – p.568-569 1991.

Pesticides and Breast Cancer



contain aromatic hydrocarbons

Similar formulation to sexual hormones

Accumulated in specific organs which attract this class of chemical

Liver enzymes are broken down into by-products and removed quickly from the body

This removal is managed by the lymph system

INNOVATIVE WAY TO TREAT BREAST CANCER



Revival System in Cancer Patients

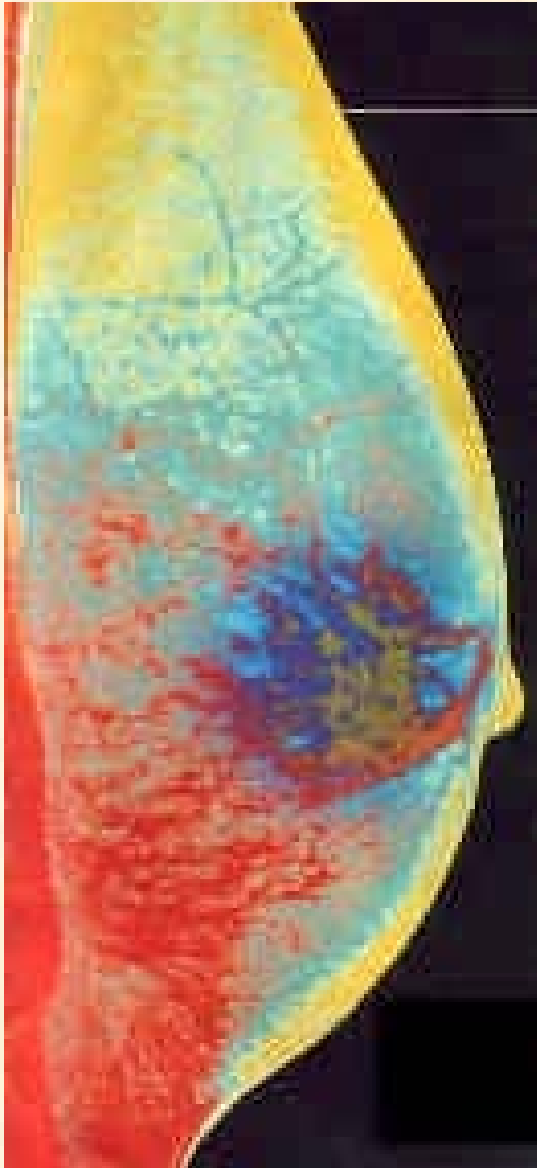
- A return to normal health status



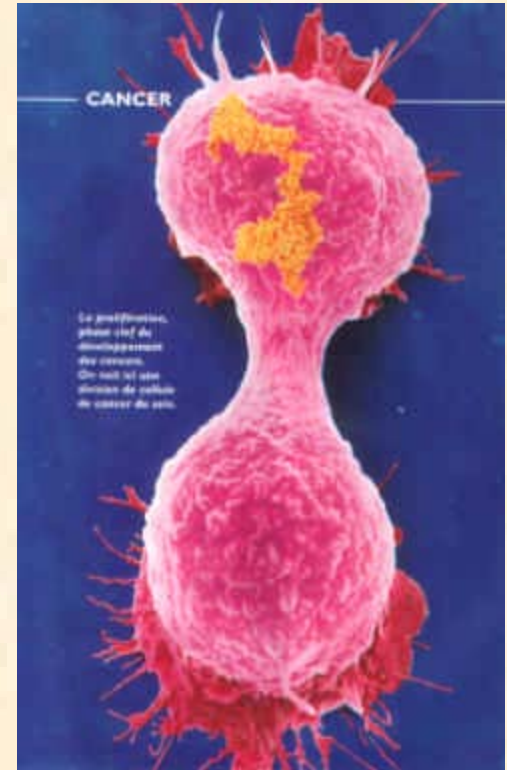
EUROPE: Dr. Serge Jurasunas' astounding cancer results

Global Outreach – Europe's best-known holistic/naturopathic/integrative healer, Dr. Serge Juarunas of Portugal, seated, C, photo at L, at the 2002 International Symposium on Reactive Oxygen and Nitrogen in St. Petersburg, Russia; at R, attending a seminar at the Pasteur Institute, France. Dr. Jurasunas recounts more than 30 years of breakthrough cancer therapies on 33,000 patients (se pages 14,16).

Breast Tumor

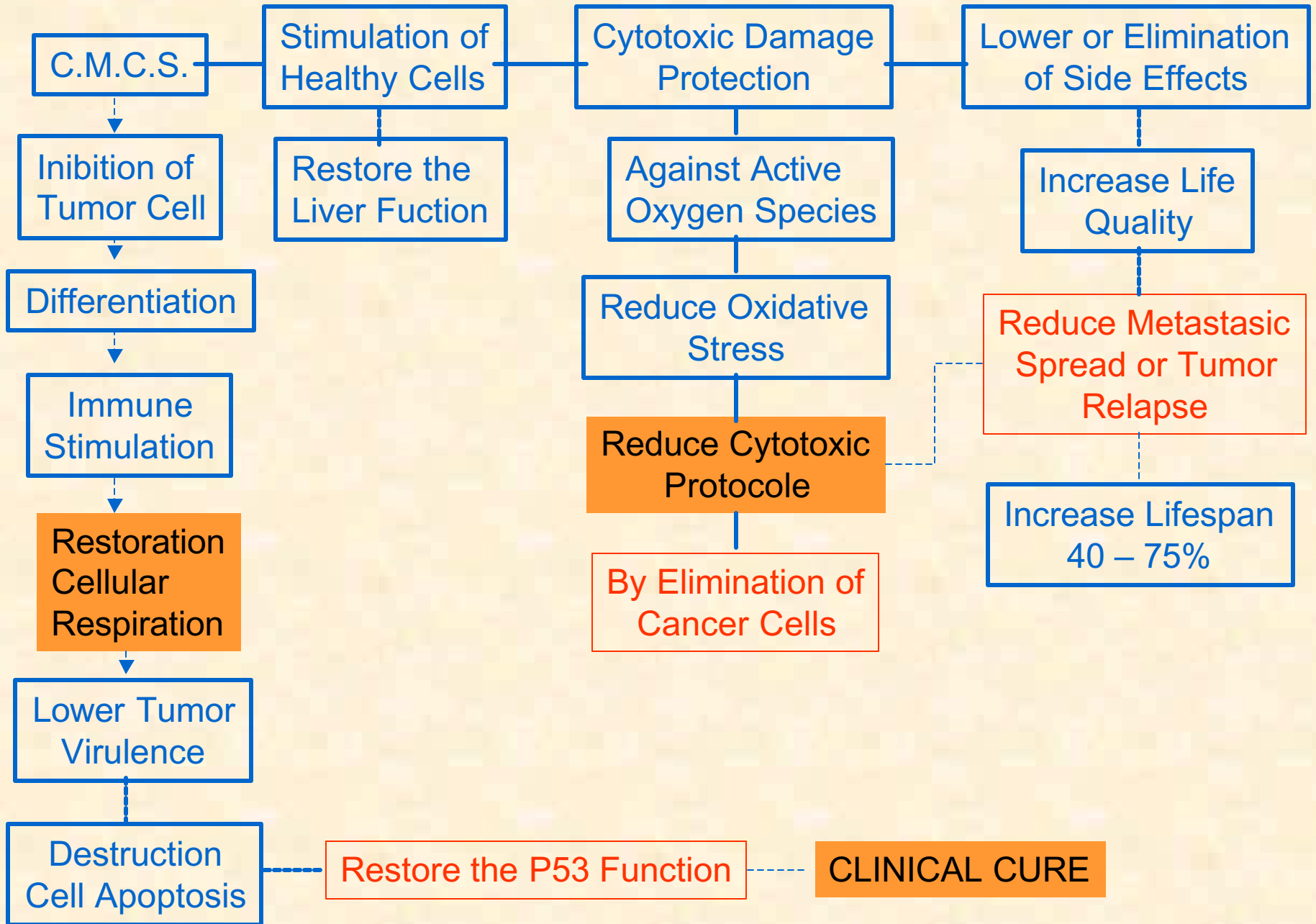


Proliferation is the key phase of cancer development.



A cell division of a breast cancer.

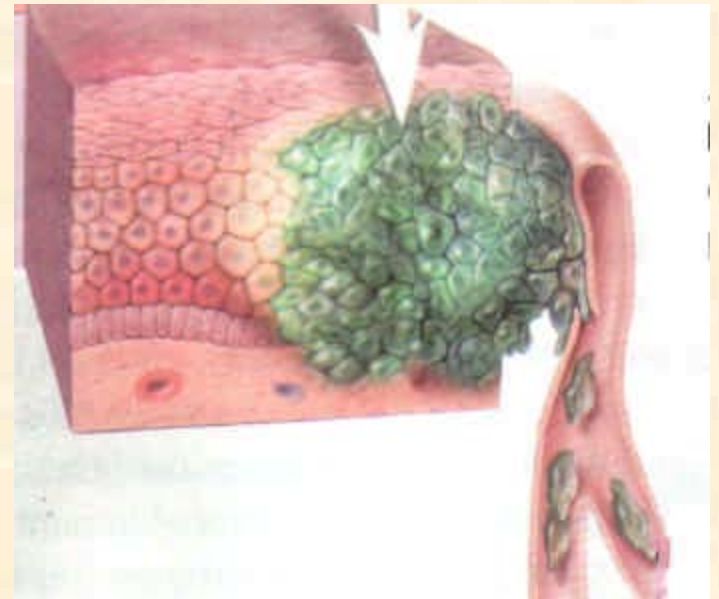
The cancer cell knows how to defend against powerful drugs misleads the immune system, produces toxins, grows and travels.



Cellular differentiation:

- When normal cells divide they acquire the function of the **type of tissue they originate from.**
- For instance liver cells only divide to maintain normal liver size and function – and when they divide, the new liver cells know to stay in Liver and perform specific liver functions.

But cancer cells are undifferentiated. They do not perform the normal functions that they were originally programmed, and they have the tendency to proliferate uncontrollably and spread. (metastasis).



However, certain natural substances have been found, that instead of destroying cancer cells, return them to states of normally – Re-differentiation.

Therapy: Bioflavonoid, quercetin, vitamin A, D, coenzyme Q10, glutathione, sulphur based amino acids-nucleotides.

-The enzyme yeast cells I use for now 3 decades have proven to encourage – Redifferentiation.

-The vitamins, enzymes, sulphur based amino acids enzymes of the redox and other small molecules contain in Enzyme Yeast cells help rehabilitate cancer cells during the treatment. (1)

1 – Serge Jurasunas – The therapy of Enzyme yeast cells in cancer diseases, C.F.S. And Aging process – Natipress Lisbon 2001

Exogenous nucleotides (Nucleosan) as show results in differentiation of cells, inhibiting proliferation of cancer cells and apoptosis (2)

-Exogenous nucleotides help to recover the damage of normal cells by anti-cancer drugs. Enhance the function of marrow and reduce leukocytose and thrombocytose.

-DNA extracted from Salmons albino (including 4 kinds of nucleotides at the same volume) (A. G. T. C.) (3)

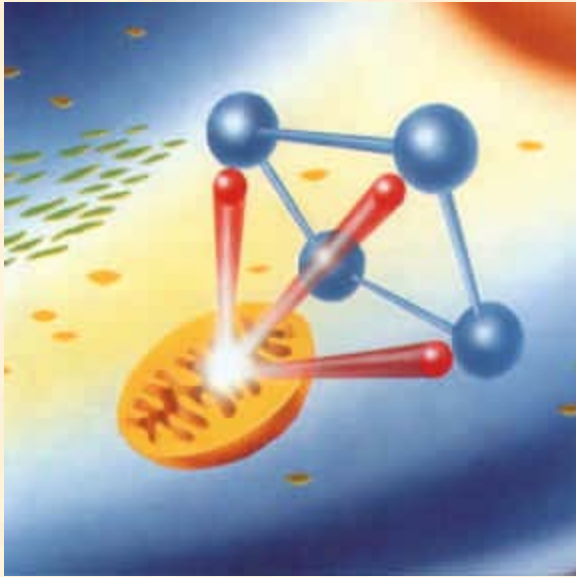
-The antioxidant compound formula Anoxe – have shown to induce apoptosis in cancer cells. (4)

2 – Tanuma S, Apoptosis, Tokyo Uni – Shuppan-Kai (1996)

3 – Marishige F. Et al, Second International Symposium on modulation and meditation of cancer by vitamins and micronutrients. Fe.13.15

Tucson USA (1985)

4 – Prof. Jonh G. Ionescu, Prof. Serge Jurasunas, Dietmar Weber Ph.D. Effects of natural SOD like compounds on Redox potential and free radical generation in venous blood and plasma – Research dept. of the spezialklinik Neukirchen – Germany 2002



Antioxidants 1 – A great deal of evidence has accumulated linking reactive oxygen species (ROS) and cancer. ROS has been shown to be involved in cancer formation, basic cancer, cell biology and **cancer treatment**.
-Superoxide -Hydrogen peroxidase - Hydroxyl radical.

-Antioxidant defence – **superoxide dismutase (SOD) Catalase (CAT)**
(endogenous) **Glutathione peroxidase (GPX)**

ROS – High concentration – are cytotoxic.

ROS at low concentration are involved in the regulation of cell's physiological process.

- **cell differentiation**
- **apoptosis**

1 – Allen RG and Balin AK – Oxidative influence on development and differentiation: an overview of a free radical theory of development. Free Radic.Biol.Med 6: 631.661.1989

Antioxidant 2

-Cancer (mutagenic) cells are nearly always low in Mg SOD activity and usually low in Cu-Zn SOD activity - GPX activity is variable. (1)

-Recently it has been shown that in some cancer cells, (breast cancer) reduced expression of Mn SOD is due to mutations in the promoter of the gene.

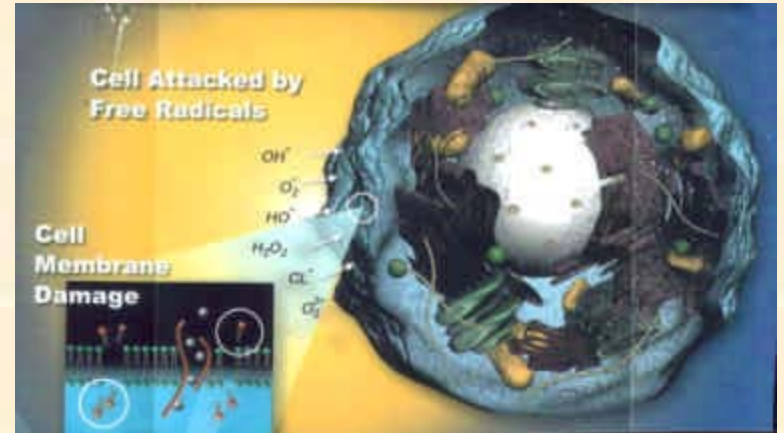
-Powerful evidence for a causal relationship is that in various model systems, ROS cause cancer: moreover, Antioxidants in general and SOD inhibit malignant transformation. (2)

1 – Oberley LW – Superoxide dismutase in cancer: In: Superoxide dismutase, Vol.II. Ed. Oberley W. Boca Rator. Fl.CRP Press.1982 – chap.6

2 – Cerrutti P.A.-Proxidant states and cancer: Science 227: 375-381.1985

Antioxidant in cancer Therapy – 3

- Many lines of research suggest that antioxidants and SOD play a pivotal role in the treatment of cancer (1) – to induce apoptosis pathway.



-It has been suggested that the potential use of antioxidants is beneficial to reduce oxidative load and as therapy to prevention of irradiation and chemotherapy damage.

-My proposal is an antioxidant genotherapy that eliminate side effects and pains caused by the cytotoxic therapy, reduce oxidative load, prevent breast tissue fibrosis and interfere in the malignant process of the tumor cell. (To cause cancer cells to “commit” suicide).

1 – Grennberger et AL – Modulation of Redox signal transduction pathways in the treatment of cancer. Therapeutic use of antioxidants: Antioxidants x Redox signalling n°3-p350-354.2001

The New Low Molecular Antioxidant Compound – ANOXE

SOD Like activity

Contain: glutathione, catalase, catechins, vitamins C, E, beta-carotene, tannin polyphenols, selenium, riboflavin – (in base of granule for oral absorption).

-Anoxe is a natural compound made from a variety of herbs and seeds with large quantity of antioxidants activity. The raw material is modified through a process of infrared ray, steam processed, brewing, to cut the polymer structures where antioxidants are trapped (1) (2).

-The result produce a low molecular (small molecules) antioxidant when compared to SOD and catalase tablets (poorly absorbed) for immediate absorption and quick healing (3).

1- Niwa Y and Miyachi Y – Antioxidant action of natural health product and chinese herbs – Inflammation 10-79-91-1986.

2 – Niwa, Y.Kanoh. T.Kasama. T. And Negishi M. Activation of antioxidant activity in natural medicinal products by heating, brewing and lipolulisation. A new drug delivery system. Drugs Exptl clin. Res 14. 361-72 1988.

3 – Serge Jurasunas – Therapeutic application of a new low molecular antioxidant (Anoxe) in ROS activity. International Symposium on ROS and Nitrogen species, diagnostic, preventive and therapeutic values. 8.12 July 2002. St. Petersburg- Russia.

ANOXE

Low molecular
Antioxidant SOD

Protect against radiation
damage
Phenotypic properties
Differentiation
Implication for the malignant
transformation process

Stomach
destroys
large
molecules

Full enzymes are necessary
For healing process

Cross
intestinal
barrier

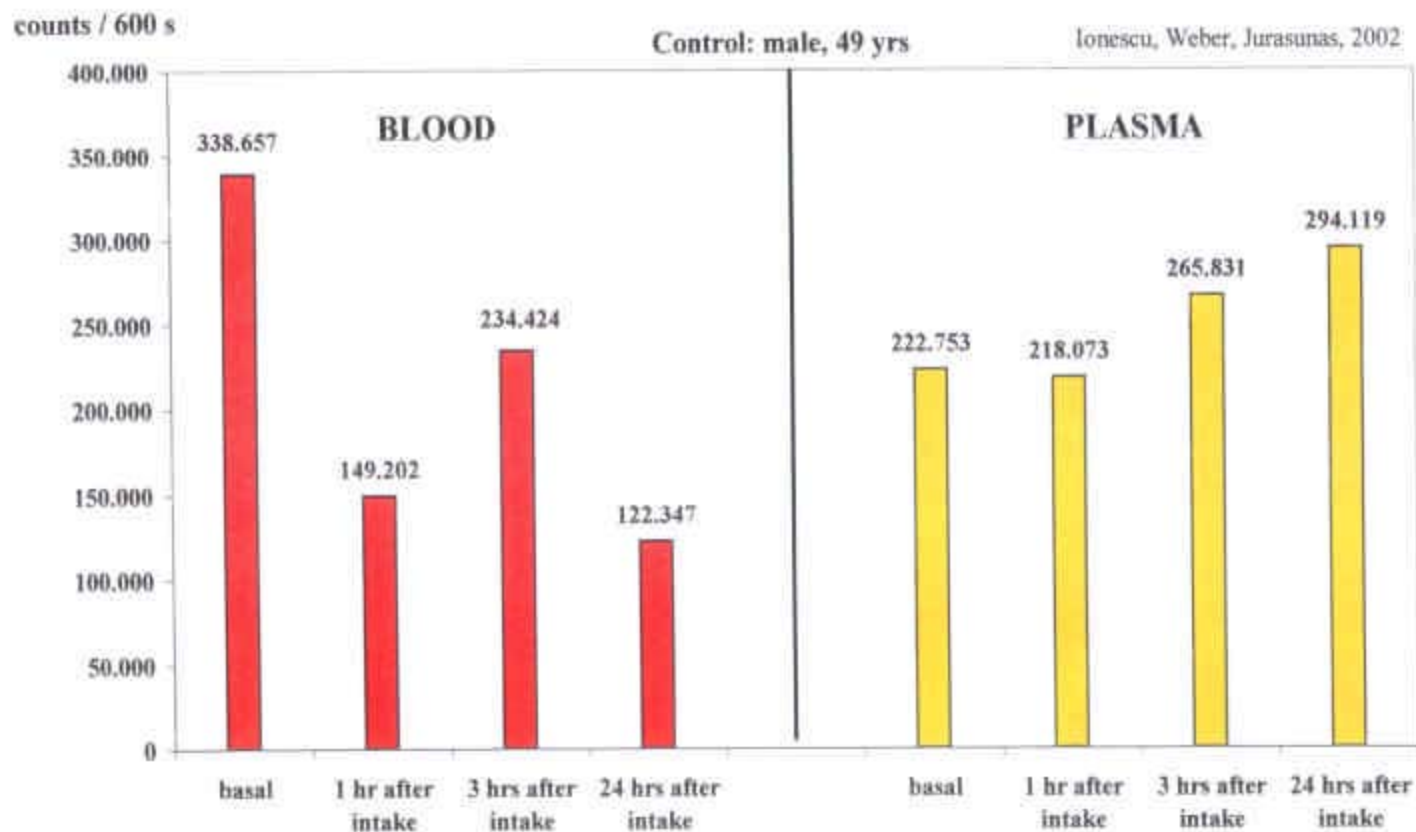
diffusion
Blood
circulation

Inflammatory tissue

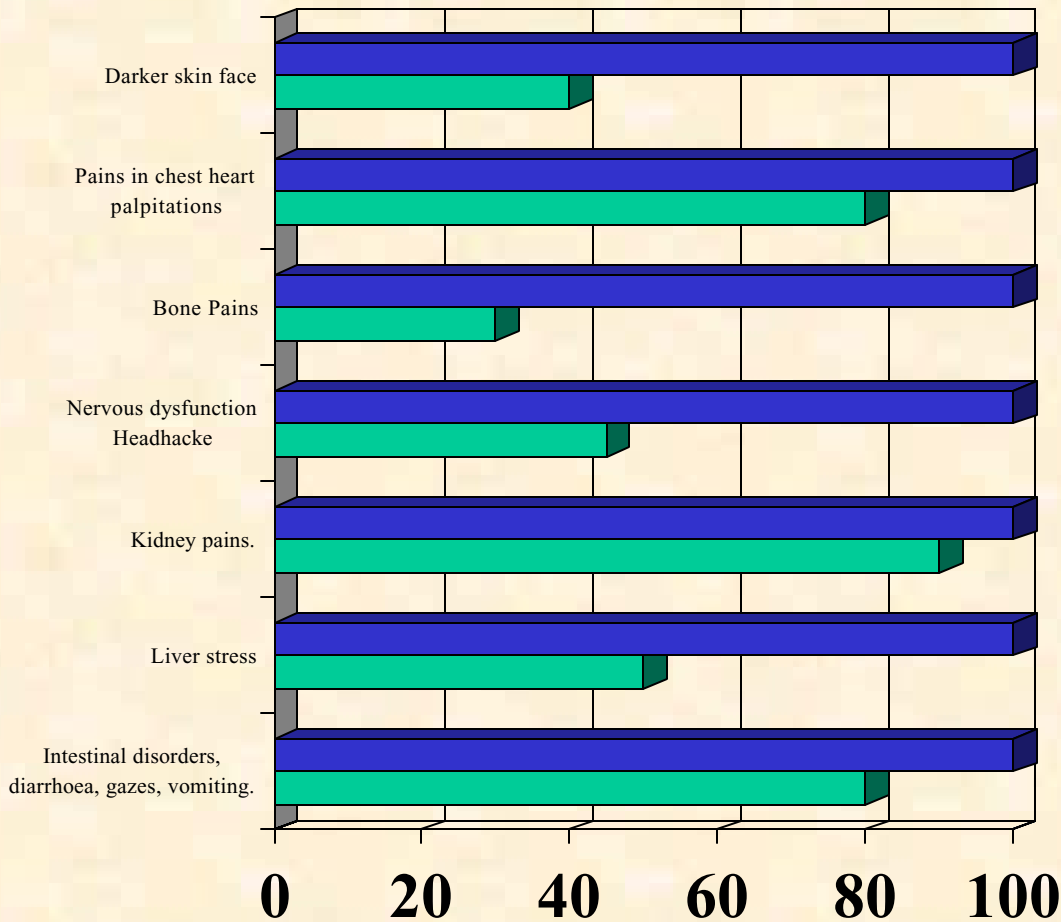
Target
cells

Cross cellular
membrane barrier

Fig. 4 Effects of Anoxe intake (15 g / 250 ml H₂O) on free radical generation in blood and plasma, in vivo



ANOXE prevent or reduce chemotherapy toxic side effects by reducing and neutralizing ROS with anti-inflammatory activities



Survey of 100 cases of breast cancer patients aged between 36 and 52 years.

■ After 30 days taking 24g of Anoxe daily

■ Chemotherapy/radiation side effects at the first consultation

いるという知らせがあった。それがSOD食品とでも近い効果を実感しており、しかもより強力だといふ。

ユウササニ医師はガン患者の治療相談を受けると多く、サプリメントや健康食品を活用した上でどのように使っていくかを具体的にアドバイスしている。その時に引用するのが1998年の「新しい血液の創造分析」というもので、最近毎日今のテレビ番組でもよく出てくるようになったが、明視野や位相逆の顕微鏡（1000倍以上にするとよく見える）で一部の血液を採血直後に観察し、赤血球細胞のかわらや白血球の活動状態を見るものである。詳しくは「狂野の血行」ジュリエット・ブノワ博士著、武蔵野大学、中央アース出版社刊や東洋館出版「狂野の血行」により、血液細胞が活性化された状態でダメージをととのくまい受けられているかよくわかる。

また、ユウササニ医師は目の紅斑分析（という手段も使っておりこれはよく知らぬアプタ細胞に由来する細胞工学の一種でもある）人によって千差万別である紅斑の色やかたちで現れる病気から、後のどの程度に腎臓が起きているのかを大まかに把握することもできるという。ユウササニ医師はこうした手段と自然な食品を用い、いの中東代替医療の創始者だ。

材料は日本の食品！！

ユウササニ医師からは、このSOD種食品を発売したというロシアで開かれた学会の講演資料や、実際に使ったガン患者が小さくなった患者さんの写真も送られてきた。ボルトセルには生きている世界でも珍しい補糖を見つけたのだからカーニスという材料は調べるべきだ。これがほとんど日本人の食料にのらるような食料ばかりであったから驚いた。

大豆、玄米、そば、緑茶、小麦胚芽、梅干、アヲ、ハト麦などから原料。これらを発酵させて抽出し、なんと蒸気で乾燥させたことで、ユウササニ医師のSOD種食品は作られている。抽出で発

ガン克服体験者が相談に応じます

自然療法講習会（協賛・今村光一事務所）

10年前に再発をくり返す予定のガンを克服させた長谷部孝徳氏が自身の体験から食事療法を軸とする講習会を開く。長谷部氏は外国のガン病院への入籍の経験や自宅への出張しての食事療法の指導なども経験が豊富で、お役に立つはず。今村光一も講師。

■日時—2003年2月26日(水)

午後1時—3時 講演会（今村、長谷部）
3時—5時 個別相談（受講者のみ）

■場所—ホテル・ゼー・エルトン（神奈川県川崎市、豊島区新築元町14番地）
電話044-720-1111

■料金—10,000円（長谷部氏の場合は18,000円、10組限定につき長谷部氏に限り、個別相談は別途10,000円）

■問い合わせ—030-6007-2591 ■申し込み—ファックス042-743-9551

酵させることにより、巨大分子を低分子へとバラバラに細かく分解することができるとのことだ。最終的な食品には、グルタミン酸、ホウレンソウ、ホウキョウ、オニオン、ホウレンソウ、リボフラビン、マヨネーズ、ポリフェノール、ビタミンA・C・Eなどが含まれており、糖質は活性状態で存在し、抗酸化SOD食品としては非常に理想的なものになっているようだ。糖質活性は人の体内でも最大24時間保たれていることがよく知られており、

糖や脂肪の代謝から正常な細胞を保護するのにも効果が見られ、細胞の癌化、新しい癌の発症ができるのを抑制するのにも役立っているらしい。ユウササニ医師は現在、100ケースのガン患者を対象に新しい細胞研究を行っており、ここでは強力な抗酸化作用の他に、初期の解毒を強化させる力が自分の食品にあるかも調べているという。

オランダ、スペイン、ポルトガルがすべて日本が西洋医学の知識を学んだ国々の代表みたいなものだが、そこいへにも日本の食材と加工技術をつかってセンを避けてしまふ食品が作られたというから面白い。確かに日本や中国などの食材は、肉類では動物性であると珍しがられて大受がある。梅干、枝豆、納豆、イソフラボンなどはアミノ酸、豆腐、味噌などは、今ではアメリカのスーパーでもふつうに売っている。これを従来の洋食風にアレンジして、かなり効果が出てきているのである。さて、私たち日本人は、どこかに特効食品がないだろうかと思しい健康食品に結びつくことを繰り返しているよりも、思い立くもない身近にある食材を大切に扱っていたほうが意外にむずかしい効果を出せることができるのかも知れない。幸甚幸甚！

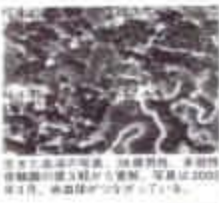
40日で腫瘍が半分

実際にガン患者がこのSOD種食品を使ったケースの中には、腫瘍量が最初で50%縮小したケースがいくつかある。6か月から1年でガン腫瘍が溶解化したものもある。手術試験の段階であるが、このSOD種食品がガン細胞のアポトーシス（自己死）を促し、同時に活性化された方から健全な細胞をまもる効果もみられる。このことも観察されている。

ユウササニ医師のもとで、このSOD種食品は1997年から約340人のガン患者に使われており、最も高い効果を示したのは乳ガン、肺ガン、卵巣ガン、前列腺癌だといふ。その他では、抗ガン剤治

療や放射線治療から正常な細胞を保護するのにも効果が見られ、細胞の癌化、新しい癌の発症ができるのを抑制するのにも役立っているらしい。ユウササニ医師は現在、100ケースのガン患者を対象に新しい細胞研究を行っており、ここでは強力な抗酸化作用の他に、初期の解毒を強化させる力が自分の食品にあるかも調べているという。

オランダ、スペイン、ポルトガルがすべて日本が西洋医学の知識を学んだ国々の代表みたいなものだが、そこいへにも日本の食材と加工技術をつかってセンを避けてしまふ食品が作られたというから面白い。確かに日本や中国などの食材は、肉類では動物性であると珍しがられて大受がある。梅干、枝豆、納豆、イソフラボンなどはアミノ酸、豆腐、味噌などは、今ではアメリカのスーパーでもふつうに売っている。これを従来の洋食風にアレンジして、かなり効果が出てきているのである。さて、私たち日本人は、どこかに特効食品がないだろうかと思しい健康食品に結びつくことを繰り返しているよりも、思い立くもない身近にある食材を大切に扱っていたほうが意外にむずかしい効果を出せることができるのかも知れない。幸甚幸甚！

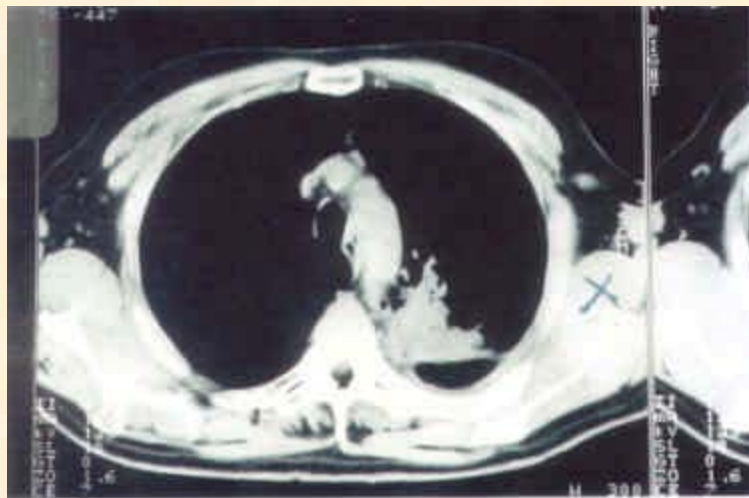


2002年4月27日の写真。ApoE遺伝子により高濃度のLDLが分泌されるが、活性酸素による細胞膜のダメージも減った。この状態から細胞は30%以上回復している。



ApoE遺伝子が40日目の検査写真。腫瘍の大きさが半分ほど減っています。

左側までが元腫瘍（50%増大時）のMRI写真。右側までの乳ガン細胞は手術による腫瘍です。この後ApoEを1日2回服用した。

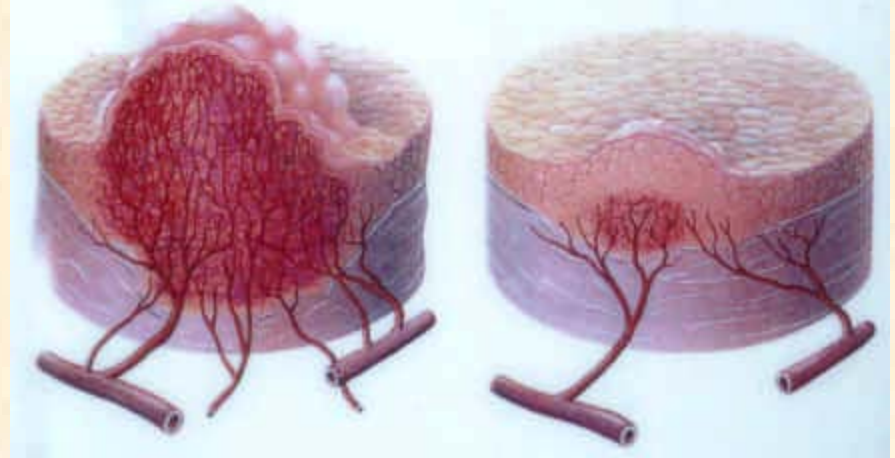


Angiogenesis

Therapy anti-angiogenesis – To chock off the blood supply to the tumor. To starve tumors to became weak and begin to shrink. The result is a lot of dead cells which is more easily recognize as target by the body's own immune system.

Tumor continues to expand, eventually spreading to other organs

After treatment with antiangiogenic drugs, tumor diminishes in size



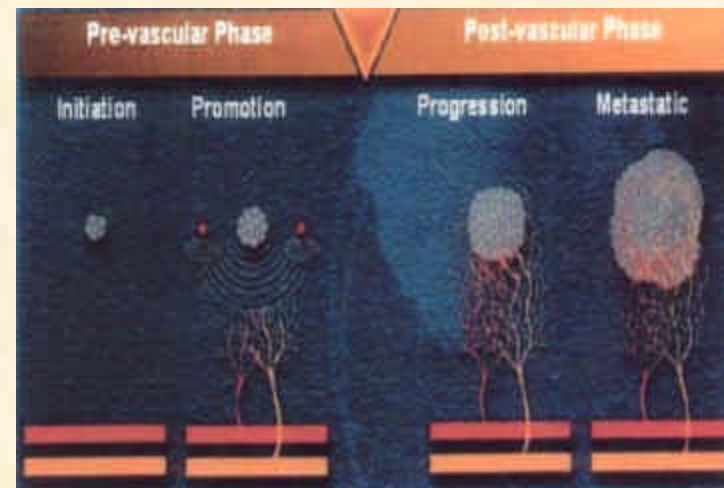
Fighting cancer by attacking its blood supply

-Car-T-cells (peptide of shark cartilage in frozen form) (1).

-Venom snake (Horvi 33.300) – contains also protein called contartrastine which inhibits tissue adhesion and invasion from tumor cells. Reduce up to 90% in breast cancer cases lung metastasis (Professor Francis Markland USA)

-Genistan is soy food (Tofu) has a inhibiting angiogenesis mechanism in tumor grow and therefore could have an important role in the prevention or dietetic food support in early tumor grow. (2)

- Green tea contains the polyphenol catechins that may inhibit the growth of new blood vessels.(3)



1 – Alain Thubodeau, Ph.D – Diane Bilodeau, Ph.D – Angiogenesis and P – glycoprotein: Their roles in cancer – TLDP – 227 – June 2002 – 97-104.

2 – Fotis T, Pepper M. Adlercrentz H, Fleischmann G. Hase Tect. Genistan, a dietary – derived inhibitor of in vitro angiogenesis. Proc. NAH.Acad.Sc.USA – 90-2690-2694 – 1993

3 – Liao et al., 239-243 – Vacic et al., 461 - 468

Cellular Cancer Killers 1

-our immune defence system is programmed to destroy any intruder or cell that the body doesn't recognize as an healthy one, this is our first defence to destroy malignant cells.



1 – T-lymphocytes cells – The sharpshooter (helped by a subgroup called helper T-cells and suppressor T cells. (enhance or reduce).

2- NK cells – anticancer activity is referred as “natural cytotoxicity”.

- repeated studies has shown that people with cancer who have high rates of NK cells activity also have high rates of survival (1)

1 – F.Komatsu and K.Kihasa – “Natural Killer (NK) and lymphokine.

Cellular Cancer Killers 2

-Study at the University of Pittsburg that follow ninety women in Stage I or Stage II breast cancer found that “NK cell” activity was a strong predictor of disease outcome when “outcome” was defined in its most basic forms as recurrency of cancer (1).

-Low NK activity may have prognostic value in predicting relapses, poor response to treatment, and decreased survival time without metastasis (2)

1 – S.M. Levy et al, “Immunologic and psychosocial Predictors of Disease Recurrence in Patients with Early stage Breast cancer “Behavioural Medicine 17 (Summer 1991) 67-75

2 – Garelik E. Wiltrout, RH Okumura, K. Habu, S. And Herberman, RBC (1986) Role of natural Killer (NK) cells in the control of tumor growth and metastasis spread: In cancer Immunology: Innovative Approaches to therapy (RBHerbermen, ed) Martins Nijhoft, Press – New York, NY p.151.

Therapy:

-Fresh bamboo leaf extract – (contain natural saccharides such xylase vitamin B complex, amino acids, enzymes, etc.)

- Enzyme yeast cells – (Beta-Glucan-D-Mannan, vitamin A, C, E, Zinc, etc...)

Many lines of research focus the immunostimulation effects of polysaccharide contain in cells walls of cell wall yeast. (1.-2)

Anoxe – (antioxidant compound enhance NK cell in breast cancer)

Thymus peptide extract (oral) or i.m. (3)

1 – Serge Jurasunas – The therapy of Enzyme yeast cells in cancer disease, CFS and aging process p.p.12.13 –Natipress, Lisbon, 2001.

2 – Professor G. J. Kraus – Pharmaceutical Institute of Regensburg University – Germany

3 – MC.Pesic M.D. – Thymus peptides therapy in cancer patients. Explore volume 7 – Number 6.2. P.27-29-1997

Immune



1. A T-cell makes contact with a cancer tumor cell, extending tendrils to deliver a cytotoxin ("cell poison") to a cancer tumor cell.



2. The cytotoxin has punctured a hole in the cancer cell's membrane; its protoplasm has leaked out and it is ballooned with fluid.



3. The mortally injured cancer cell is deflated; only the nucleus remains inside. The T-cell remains next to it, "watching" to make sure it is destroyed.

Human T-cell attacking fibroblast (connective tissue) tumor.

Target Response Detoxification

- Detoxification should be a major medical concern -

-This method is an approach to increase the complexity of the liver and ground regulation system (G.R.S.).

-To stimulate the pattern of Phase I and II liver detoxification.

-To detoxify the lymphatic circulation, tissues from toxins and xenobiotics. Stimulate the bowel function and expel toxic material.

To increase the immune defence

Detoxification 2

Bowel – Hydrotherapy of colon (colema) – 3 times per week
or daily enema (coffee)

Hot bath – Energy sand bath (SGES) Super Grow Energy Stone

ESB

40g in a hot tub

Detoxify from toxic metals, lipid peroxide, toxins, etc...

Infrared Ray
Emitting Stone

Act as a SOD like activity bath

Increase energy level of healthy cells.

Inhibit the grow of tumor cell.

Increase blood flow and oxygen supply to tissues.

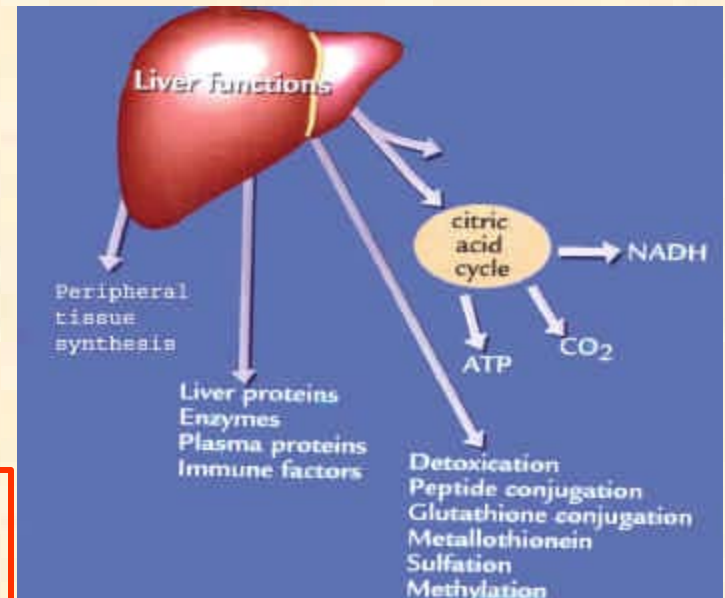
Strength the immune system.(1)

(1) Serge Jurasunas – A Far-infrared Ray emitting stone (SGES) to treat cancer and degenerative diseases. Townsend Letter for Doctors and Patients – 123-131 – 203 – June 2000.

Detoxify drink formula 3

(also to increase immune function detoxify and reduce oxidative load for total body response liver)

Formula that we use in our Institute for our own cancer patients.



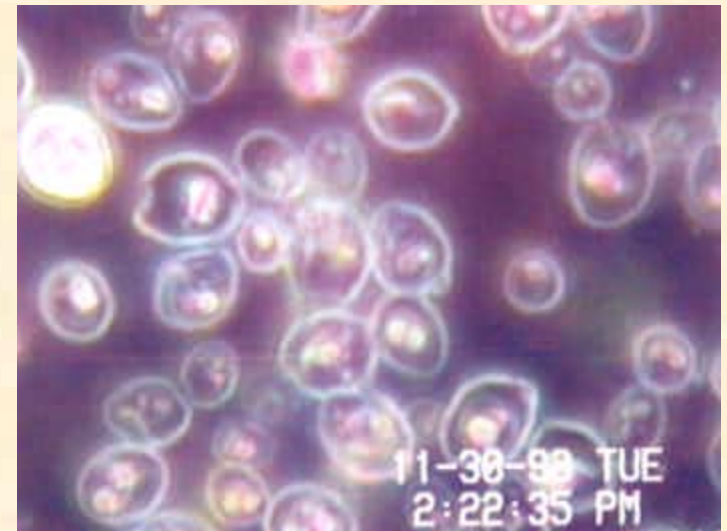
- 16 oz of vegetables juice include 1/3 of red beet juice – 6 g low molecular antioxidant (Anoxe) – 2 tablespoons of Enzyme yeast cells (zell-Oxygen) one teaspoon of desiccated liver in powder – one tablespoon of liquid chlorophyll.
- 16 oz of biologic Kefir – 8 oz of organic apple juice .
- Contain also vitamins, minerals, selected B-complex, amino-acids.

Posology – 3 times per day between meals. Both the drink and the ESB detoxify, increase the immune response and help to restore the body.

Detoxification formula 4

Regeneration of the body, to activate cell's mitochondria by-pass R.C. blockage and stimulate ATP production.

- 1 cup of fresh vegetable juice.
- Add 20 ml of enzyme yeast cells.
- 1 tablespoon of liquid chlorophyll.
- 2 sachets (6 g) of Anoxe.
- 15 ml of fresh bamboo extract.
- 100 mg of organic germanium powder.



Important: The composition of the enzyme yeast cells preparation make a synergetic effects benefits to nutrients absorption.

Take 3 times per day: Before breakfast – one after the ESB and at bedtime.

DETOXIFICATION

Clean water
Rest

Dietary need

Improve liver function

Detoxify
Peroxisome
SOD

Increase cellular functions

Increase O₂ supply and
cellular respiration in
mitochondria

SOD

Less repair
damage

Decrease ROS activity
Increase ATP production

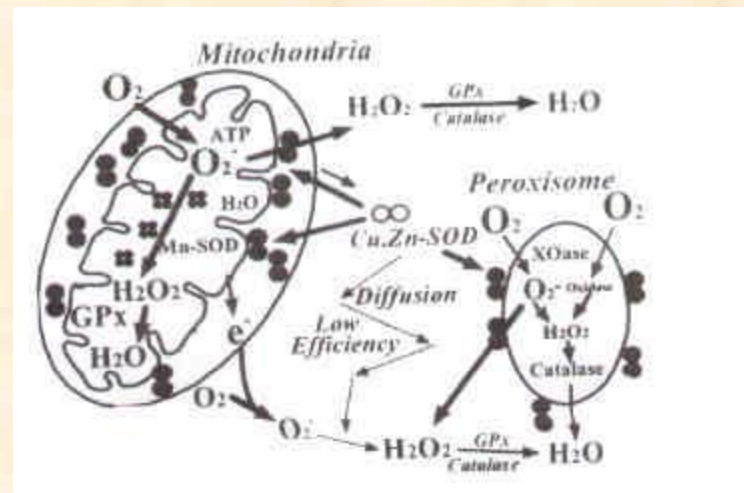
Increase proteins synthesis

Enzymes
Hormones
Dopamine – adrenaline
Cellular repair

Reverse Mitochondrial Damage

- Degenerated cancer cells can potentially be reversed back to normal cellular function by reactivating mitochondrial function mainly the blockage of the **respiratory chain** caused by the inactivation of the enzyme cytochrome oxidase (cytochrome a/a 3) (1)

Cancer: 50 percent inactivation of the cytochrome oxidase.



Enzyme – rich foods can by-pass the blockage in the RC specially nutritional substances, small molecules, enzymes of redox contained in **Live Yeast cells**.

1- Seeger P.G. – Biologische Krebsabwehr. (Biological defence against cancer). Neuwider Verlagsgesellschaft, Neuwied, page 84

Psychological approach and therapy of support

- 1 – Take responsibility of the disease.
- 2 – Cancer disease is not without solution.
- 3 – Trust yourself, your body and your doctor.
- 4 – Be important, change your look.
- 5 – Read spiritual books and speak with other cancer patients under remission.
- 6 – Start a program that keeps you busy.
- 7 – Do some yoga, shiatsu, have an hobby.

Therapy: Melatonin, Horvi psy4 (venom snake) neuro-ginsan (Homeopathic preparation) Hypothalamus i.m., coenzyme Q10, Taurine, Antioxidants, Stress formula.

Alternative check-up during (or before) the therapy of breast cancer.

These is the **information** that you need to know, in order to control the clinical evolution of disease and achieve success in your treatment of breast cancer.

- Oxidative stress
- Nutrients profile
- Lipid profile
- Fungal and bacterial invasion
- Immune profile
- clotting profile
- Platelets aggregation profile
- Red cells condition
- Level of blood intoxication and oxygen status
- Liver stress profile
- Nerve condition

Breast cancer is to women a depressive, mutilate killer disease



Hopeless case (cancer left breast)

Mastectomy – chemotherapy
Breast implant. Developed infection and new small tumor inside breast implant.

Swelling arm and infected lymphatic system.

Metastasis to lung and bone.

CANCER SURVIVOR

Prove that cancer is not a final sentence.

Case: Berta - 1993

Left breast – 27 nodes were infected with metastasis. Metastasis to liver.
-Psychological support – Detoxification
– Alternative therapy include the SGES oral and bath therapy – Anoxe – etc...

In 1999 she was free of cancer or metastasis. In July 2003 she participated with twelve other cancer patients to an interview given in my Institute by a British Journalist.





Case 8003 – April 1998 – 1

F. 60 years – invasive ductal carcinoma.

Tumor extend to 7 cm diameter and considered as advanced carcinoma (T46M1M0).

A biopsy performed produces severe and extensive inflammation and therefore make surgery impossible.

Chemotherapy is suggested (taxcol, adriamycin) to reduce the size of the tumor but without success.

The patient come to see me early July.

Treatment:

CBA would be the best answer to reduce the huge inflammation.

Application – 1 per day

Goldstone (SGES) – 3gr per day

Zell-oxygene (Enzyme yeast cells) – 60ml per day

Car-T-cell peptides – 1 ampoule per day

ESB (SGES bath) – 3 times a week



After thirty five days, the tumor reduced to such way that surgery was possible. Her energy profile was good (VEGA DFM 726), the blood assessment is excellent.

Oncologists at the Portuguese Institute of Oncology were surprised and asked questions of how the inflammation reduced.

Surgery performed on the 8th September – Tumor histology revealed metastasis in 5 of the 18 lymph nodes.

The patient followed our therapy until 1999 and until February 2000 she took 600 mg daily of Goldstone, 18 g per day of Anoxe, and Immunozeleon 30 ml three times per day.

New hospital check-ups, CAT-scan, N.M-R showed no metastasis in liver, lung or bone.

Until today the patient health condition remain stable.

Conclusion:

From thousands of cases treated over the past 25 years, we may draw some interesting conclusions:

- 1 – In 80% of the cases, cancer patients improved their physical and psychological condition between 10 to 60 days.
- 2 – Significant survival rates are achievable in late stage cases. 40 to 45 percent.
- 3 – 25 percent of advanced cases after ten years are free of recurrency or metastasis.
- 4 – There is widespread evidence of the metastasis prevention before chemotherapy and elimination during the alternative complementary therapies.
- 5 – Globally our achievement for cancer remission with survival time extension up to 10 years is of 75 percent.
- 6 – In many cases we have found chemotherapy useless.

For more details consult my homepage for complete documentation, publications, research, clinical cancer cases, iridology.

www.sergejurasunas.com

Also: Serge Jurasunas “Breast Cancer Management, using the cancer Malignancy Corrective System.

www.americanbiologics.com/pdf.12thsymposium.pdf

Serge Jurasunas: An iridologist looks at Cancer from the viewpoint of treating it as a “whole disease”.

www.townsendletter.com/june2003

Serge Jurasunas believes that a daily dosage of Body-oxygen may help prevent and treat the disorders caused by decreased mitochondria.

www.alkalizeforhealth.net/Lmitochondria

Serge Jurasunas “Mitochondria DNA mutations.

www.americanbiologics.com/pdf13symposium.pdf

Serge Jurasunas “Adjuvant Nutrition in Cancer Treatment.

www.collegium_humanum.ch/colleg/sites/programm.htm

Serge Jurasunas “Far Infrared Ray Emitting Stone (SGES) to Treat Cancer and degenerative Diseases. Pg 123-124

www.wellnessfilter.com/downloads/wellnessfactbook.pdf